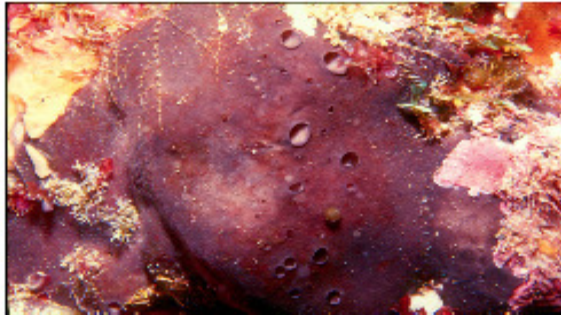


Bacterial isolates from the marine sponge *Erylus* sp.



NODS target species

- a) *Erylus inermis* (S. Migue) (Azores);
- a) *Erylus* sp. (Galician Ría de Arousa Bank (NE Atlantic));
- c) *Pachystelasma inermis* (Ireland) (Bernard Picton photo).

The species from this genus present a dark external colour (brown to black) and the internal colour is fair (white to light brown) quite noticeable when they are cut. They have a firm touch, but they are compressible. The oscula (openings for the aquiferous system) are always quite conspicuous.